

# PROBUS NEWSLETTER

Information in this newsletter is for Probus members only

## DIARY

**GENERAL MEETINGS**  
**9:30 am at The Hunters Hill Club**  
**12 Madeline St Hunters Hill**

### Thursday

**Dinner at the Hunters Hill Club**  
6pm in the week of the General Meeting  
\*\*\*\*\*

### Monday 4<sup>th</sup> February

Good Old Days Concert  
David Hobson with Claire Lyon  
2pm start at the Sydney Town Hall - please be there by 1.45.  
\*\*\*\*\*

### Tuesday 5<sup>th</sup> February

"My Life of Crime"  
Guest Speaker -  
Det. Supt Deborah Wallace, Commander State Crime Command, Gangs Squad.  
\*\*\*\*\*

### Tuesday 12<sup>th</sup> February

43<sup>rd</sup> Birthday dinner 5.30pm onwards at the Hunters Hill Club - last chance to book and order at February Meetings  
\*\*\*\*\*

### Friday 15<sup>th</sup> February

Book Club  
Hunters Hill Museum - 14:00  
No book details at this time  
Afternoon Tea - Kay Holt  
\*\*\*\*\*

### 25<sup>th</sup> February - 4<sup>th</sup> March

Probus Group Cruise  
Southern Barrier Reef Discovery Cruise  
Contact Tony Saunders - 9817 1432  
\*\*\*\*\*

### Reminder

**Annual subscriptions are now overdue**  
**Please make your payments to Judith at the February meeting**

## Masters of Modern Art from the Hermitage Exhibition

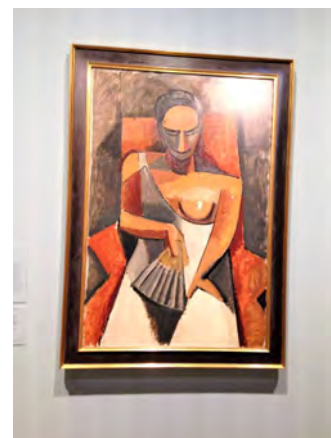
Ten art enthusiasts braved the heat on Tuesday 15 January to see *Masters of Modern Art From the Hermitage at the Art Gallery of NSW.*

The exhibition, from The Hermitage State Art Museum in St Petersburg, presents a magnificent selection of works from some of the most famous figures of modern art, including Monet, Cezanne, Picasso, Matisse and Gauguin.

There are 65 paintings in the collection. We were assisted in our appreciation by our own informative guide, who pointed out the subtle points of the various works and passed on some interesting vignettes about the artists.



Bouquet - Arum Lilies 1912  
Henri Matisse



Woman with Fan  
Pablo Picasso



Sketch for "Composition V" 1911  
Wassily Kandisk



A stunning example of a pre modernist, post Raphaelite crowd scene.  
An unlikely find in the Hermitage.

Unknown 2019

**WHAT'S COMING UP**

**Tuesday 5<sup>th</sup> March 2019  
Annual General Meeting**

No Guest Speaker  
\*\*\*\*\*

**Tuesday 12<sup>th</sup> March**

Men's Outing  
Royal Sydney Yacht Squadron  
Leave Hunters Hill PO 12:30  
Will probably car pool  
Cost \$30-\$50 depends on order  
Contact Neville Davey  
0408 981 973  
To advise attendance  
\*\*\*\*\*

**Wednesday 13<sup>th</sup> March**

Opal Outing - Kiama by train  
Depart Central 09:25  
arrive back shortly after 16:00  
A day not to be missed.  
See Margaret Conley for more info  
\*\*\*\*\*

**Wed 27<sup>th</sup> March – Sun 31<sup>st</sup> March**

Melbourne Flower and Garden Show  
5 days/4 nights  
\*\*\*\*\*

**Monday 15<sup>th</sup> April**

Town Hall Concert - Vienna Nights  
Bookings and payment \$45 at Feb. meeting. This concert features Tenor Daniel Belle and Soprano Georgia Wilkinson singing our favourites from Strauss, Franz Lehar, Mozart etc. See Barbara Banner  
\*\*\*\*\*

**Wednesday 24<sup>th</sup> April**

Opal Outing - State Library Tour  
Meet Macquarie St entrance 9:45 for coffee. Tours starts 10:15 - Ends around 12:30.  
Carol Pelham needs to advise Patrick Dodd the numbers.  
\*\*\*\*\*

**Advance Notice**

**28<sup>th</sup>-29<sup>th</sup> July**

Christmas in July - Bathurst  
See attached brochure  
There is a \$20 non-refundable deposit payable with the booking - the club has paid a deposit on the hotel.  
\$440 per person

**Talking of Finances**

Your management committee has recently undertaken a review of the club's financial position and as a result we made the recommendation to increase the annual membership fee from \$45 to \$50 effective January 1, 2019.

It was interesting, and somewhat alarming, to establish that the costs of operating the club are in the order of \$78 per member based on a membership of 100. Given a membership fee of \$50 this represents a shortfall of about \$28 per member which, fortunately has been largely funded by the valiant efforts of Jim Judge and his very popular monthly raffle.

The largest components of cost are:

- Venue Hire (HHC) \$1,200
- PSPL Capitation Fee \$1,350
- Active Retiree Magazine \$ 600
- Newsletter - Printing \$1,400

The hire of the Hunters Hill Club for our meetings is a fixed cost considered quite reasonable. The PSPL Capitation fees is set in concrete and is based on membership numbers.

We've noticed over many months that the take up rate of the Active Retiree magazine has been reducing hence we have advised PSPL that we will reduce the numbers to 25, with a corresponding reduction in costs of about \$350.

The Newsletter is currently costing \$107 for a 4 page issue and occasionally, more if we include additional pages. That cost is for the printing of 70 copies that you see on the table at the rear of the room at our meetings.

Each month I send the Newsletter to 75 addresses via email. These 75 addresses include 16 which cover husband and wife couples. Hence, 91 members are recipients of the Newsletter each month. After the meetings Gordon Sanson mails out 6-9 Newsletters to "non-attendees" that don't have an email address.

I am in the process of obtaining alternative quotes for printing the Newsletter in reduced numbers, and, although I don't advocate it, reverting to black and white. I simply want to see what our options are.

*Mike Allum*

*Vale*



Annette Kent, wife of Dr. Charles Kent, joined Hunters Hill Probus Club in 2015. She was very much a family person, the mother of three sons and a doting grandmother. She was born in New Zealand and has several siblings residing there. She and Charles loved to travel, and resided for a number of years in Great Britain.

Our esteemed fellow member had an inquiring mind, was fiercely independent of thought and personified generosity of spirit.

Towards the end of 2018, she was very excited about sharing her birthday here in Sydney with all her siblings most of whom came across from New Zealand to celebrate with her.

Annette very ably took on the position of Convenor of our Book Club. She didn't just read the books, but researched them and their authors and shared reams of this information with fellow book club members.

Annette dealt with the diagnosis of pancreatic cancer with pragmatism, acceptance and bravery.

Sadly, she succumbed to this relentless disease on the 25<sup>th</sup> January 2019.

*Margaret Timbs.*

### Cruising the Inside Passage

Having completed our Rocky Mountaineer train trip to Banff and the return journey to Vancouver by road, we started the next part of our adventure at Canada Bay, Vancouver, where we negotiated the tedious exercise of Immigration, Customs and Embarkations procedures, before boarding the "ms Volendam".

We spent the afternoon exploring the ship before going "topside" for a "sailaway" party and BBQ dinner in the evening. An early night beckoned as we had "suffered" a whole string of early morning starts on land so we called it a day, which, in fact, was untrue as it was night-time.

Thursday we spent "at sea" enjoying the various activities, talks, food and shows on board. The view outside was somewhat limited due to thick fog.

Our next Port of Call was Juneau, The Legislative Capital since 1906. It started out as a gold mining camp back in the 1880 and soon grew to become a small town, in fact the first to be established after the USA purchased Alaska from the Russians in 1867. Juneau is an interesting place, it is not accessible by road although has an extensive and well maintained road network. Strangely, for a Capital, access is strictly limited to air or sea travel.

An \$8 each way bus fare took us to the Mendenhall National Park just 15 minutes ride from downtown. We expected to see Black bears on our walk around part of the National Park but access was limited, ironically because bear activity was quite strong as a Mum and two cubs were in the area "fishing" for salmon as they (salmon) made their way upstream. We did however see the Mendenhall Glacier, yet another spectacular sight, measuring some 12 miles long and a mile wide at the base. A quick stroll around town after our bus trip back and we were back on board for dinner and the nights show.

Next stop, Skagway another "gold rush" town dating back to the late 1890's. Now this was an interesting town, about half the size of Juneau but without the Government connection. Hence, when the last cruise ship leaves for the season (our ship) most shops shut up until April when the season starts again. All they have is tourism. We strolled the town, taking in all the sights and the eccentricities of the local. Picture if you will, hick-town with a series of boardwalks, wooden building and not much advance in some 200 years. All this set against some amazing Alaskan scenery as a backdrop. Back on board for dinner and the nightly show finished off the day.

We visited Ketchikan, the salmon capital of Alaska. We were told to expect rain as they measure rain here not in inches but FEET, some 320 odd days of rain a year is not unusual. A small coastal

town full of old curio shops, a plethora of jewellery stores (much like everywhere else we have been in Alaska) and "salmon based" touristy vendors. Again, I suspect they will be like a ghost town once the "Volendam" leaves later this evening and they'll shut up shop until the next Spring. For the life of us we cannot figure what the heck they do in winter. Rumour had it that the bulk of the inhabitants high tail it to the warmer climes down south, Las Vegas being a popular spot it seemed.

Our tour had developed a reputation of bringing great weather with us and, lo and behold, today is bright and sunny, a little chilly but sunny. Everywhere we went the locals treated us with the utmost respect and we were seen as the modern day version of the tribal witchdoctor or, in our case, "weatherdoctors".

Our 5<sup>th</sup> day on board had us sailing into Glacier Bay National Park. We witnessed the "calving" of this massive glacier where huge chunks of ice break from the edge of a glacier, normally caused by the glacier expanding. The process begins when a rift opens in the edge of a glacier, caused by wind or water erosion, melting ice, or other events that cause the glacier to become unstable. This crack in the ice ultimately causes a block to break away from the land and form an iceberg, which falls into the ocean. Due to the potential disturbance in the water we kept a healthy distance from the glacier but nevertheless saw, first hand, nature in action.



We then had a full day at sea returning to Vancouver arriving on Wednesday. We spent the day there before departing late at night on our flight back to Sydney.

*Mike Allum*

#### Barbara's Thought for the Month

"The little unremembered acts of kindness and love are the best parts of a person's life."

Author: William Wordsworth - the poet 1770 - 1850

#### Editor's Musings

I didn't make it to the gym today. That makes five years in a row

Suicidal twin kills sister by mistake!??

There are 3 kinds of people: those who can count & those who can't.

I read that 123,237 people got married last year. Not to cause any trouble....but shouldn't that be an even number?

#### PROBUS CLUB OF HUNTERS HILL AND DISTRICT

PO BOX 1041 HUNTERS HILL 2110

President - Margaret Conley	9817 0123
Immediate Past President - Garth Juster	9817 5434
Vice President - Mike Allum	9816 3269
Secretary - Margaret Timbs	9816 2374
Treasurer - Judith Butt	9879 3228
Activities Director - Jill Regnis	9808 2482
(outings only)	0467322244
Speakers - Carol Pelham	9808 5020
Welfare Officer - Peter Kelly	0411696583
Membership Officer - Gordon Sanson	0433238004
Ashlyn Allum - Committee	9816 3269
Newsletter Editor - Mike Allum	0417596300
(email: mike.allum@bigpond.com)	
Honorary Auditor - Vacant	

**Probus Club of  
Hunters Hill**

PO BOX 1041  
HUNTERS HILL NSW 2110



**February Birthdays**

<b>Norbert Snashall</b>	<b>7</b>
<b>Ashlyn Allum</b>	<b>8</b>
<b>Ruth Cronk</b>	<b>8</b>
<b>Jean Fong</b>	<b>9</b>
<b>John Malone</b>	<b>9</b>
<b>David Brown</b>	<b>10</b>
<b>Mearle Denton</b>	<b>13</b>
<b>Alison O'Neill</b>	<b>16</b>
<b>David Bowman</b>	<b>19</b>
<b>Deirdre Page</b>	<b>19</b>
<b>Dawn Saunders</b>	<b>19</b>
<b>Greg Griffiths</b>	<b>22</b>
<b>Nancy Hattersley</b>	<b>23</b>
<b>Lynn Webster</b>	<b>24</b>
<b>Gwen Macree</b>	<b>25</b>
<b>Charles Kent</b>	<b>26</b>
<b>Doreen Carter</b>	<b>28</b>

**SPARE A MINUTE**

Minutes of the 477<sup>th</sup> Meeting of  
Hunters Hill Probus Club at the  
Hunters Hill Club on  
Tuesday 8<sup>th</sup> January at 9:30am

**OPENING**

Following the opening of the meeting with the National Anthem, the President, Margaret Conley, welcomed the following visitors to the meeting: David Lorsch, Bob and Pam Lorsch, Fran Williams, Kevin Manie, and Barbara Enright.

**OPENING COMMENTS**

The president reminded members that the Annual Subscription of \$50 is due for 2019, so please see Judith Butt. The president announced that today we have our annual call for nominations for 2019 executive committee positions. Any member is welcome to nominate, and nomination forms are available from our Secretary, Margaret Timbs. We are fortunate to have a number of people who have already put their names forward for positions and they are:

**The Role of the Official Visitor in the Mental Health System**

Unfortunately our scheduled speaker, Julian Leatherdale, again cancelled at the last minute.

President Margaret Conley successfully negotiated an emergency replacement and introduced Bob Lorsch, who spoke on the role of the Official Visitor in the NSW mental health system.

Bob was an air traffic controller for 28 years, 13 of which as vice president and then president of Civil Air, the professional and industrial organisation representing Australian air traffic controllers. He left air traffic controlling in 2000 and in 2002 became an Official Visitor Mental Health, a role he continues today. This radical change in career came about because of a family member's fall into drug addiction. The family member is doing well now.



The Official Visitors Program aims at safeguarding standards of treatment and care and the rights and dignity of people being treated

under the NSW Mental Health Act 2007.

Official Visitors are appointed by the NSW Minister for Mental Health to visit people in inpatient facilities in prisons and mental health facilities. They are independent from the health system and come from a range of cultural, professional and personal backgrounds. They make regular visits to all inpatient psychiatric facilities across NSW, they talk to patients, inspect records and report on the standard of facilities and services. They liaise with staff about any issues or concerns and report any problems to the Principal Official Visitor and/or the Minister for Mental Health.

Official Visitors can listen to patients' or carers' concerns and help resolve them, or, with permission, act to resolve them on their behalf.

Members found Bob's talk very informative and appreciated the opportunity to hear about the program.

President:	Mike Allum
Secretary:	Carolyn Jolly
Treasurer:	Judith Dunstan
Activities coordinator	Barbara Banner
Welfare:	Ashlyn Allum
Membership:	Gordon Sanson
Speakers:	Carol Pelham
Committee:	Garth Juster

The President continued - that she will be the Immediate Past President. The only position for which we don't have a nomination currently, is Vice President. All nominations need to be in the hands of the Secretary by the conclusion of the February General meeting. Our AGM will be on the 5 March 2019.

**CORRESPONDENCE**

Margaret Timbs informed:

**IN:** A letter from Branka Ivkovic, Sydney Community Services, was read to Members, in which our Probus Club was thanked for our donations to them especially at Christmas time.

**OUT:** No outgoing correspondence.

**TREASURER'S REPORT**

Judith Butt presented report.

C/B bal 1 December 2018	\$8,160.44
Total Receipts	\$2 652.00
Total Expenses	\$8,748.00
C/B bal 31 December 2018	\$2,064.44

The President informed Members that the aim of the Club is to have a kitty of about \$4000.00 as this represents annual fixed costs.

**WELFARE**

As Peter Kelly was away, Ashlyn Allum read a letter from Pat Cox thanking members for all their support during her illness.

**ACTIVITIES**

Jill Regnis delivered her report.

**MEMBERSHIP**

Gordon Sanson has requested that when members sign in, if they know they cannot attend next meeting, could they please write this information in the Comments space on the sign-in sheet.

**BOOK CLUB**

Dean Letcher informed Book Club Members that at their next book club on Friday 18 January 2019, new arrangements will be discussed and decided for the running of the club.

**MEN'S GROUP**

Neville Davey informed members that the next outing is to Royal Sydney Yacht Squadron at Kirribilli on 12 February 2019. He has arranged a bus to take men to club, and it will leave HH Post Office at 12.30pm. Men may wish to car pool or go on bus. Neville requested those wishing to attend, please email him or speak to him at the February meeting. Ross McBride advised that he will organise a trip later in 2019. This may be in November, a 6 day, 5 night trip to Crescent Head. He advised that over 30 and up to 40 people would be needed for this trip. Accommodation is a resort motel. Ross asked for a show of hands from those interested. He continued that a \$200 deposit would be required, and the total cost would be approximately \$750.

**RAFFLE**

Jim Judge informed that 300 raffle tickets sold today. Prizes won by Chris Coulter, Bambi Michael, Joan Gai and Gary Trail. As 2 tickets were drawn out together, Jim said he would buy an additional prize.

**A FULL COPY OF THE MINUTES MAY BE OBTAINED FROM THE SECRETARY**